

PARKS, RECREATION AND OPEN SPACE MASTER PLAN

BRSSD 2x2x2

March 2, 2021

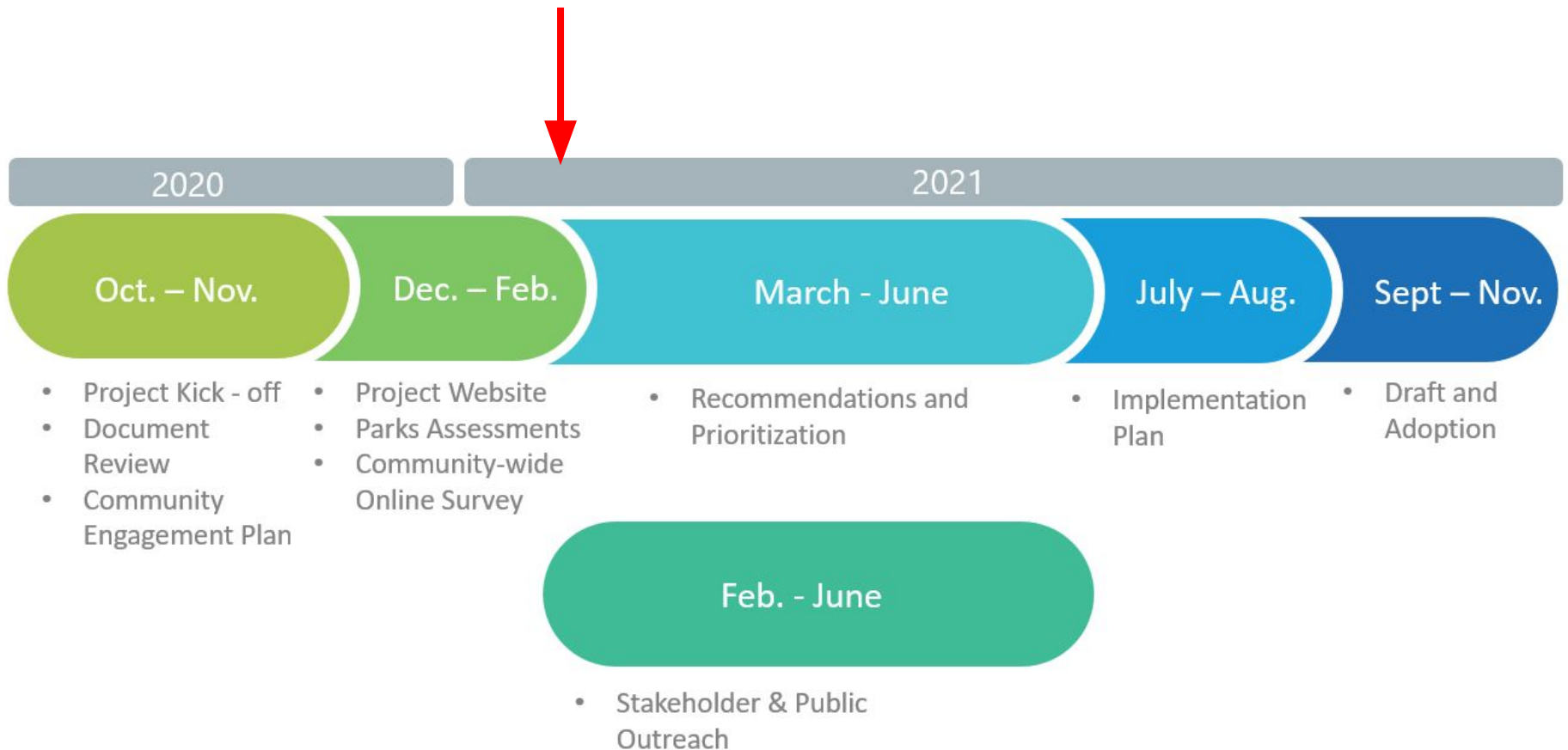


PURPOSE

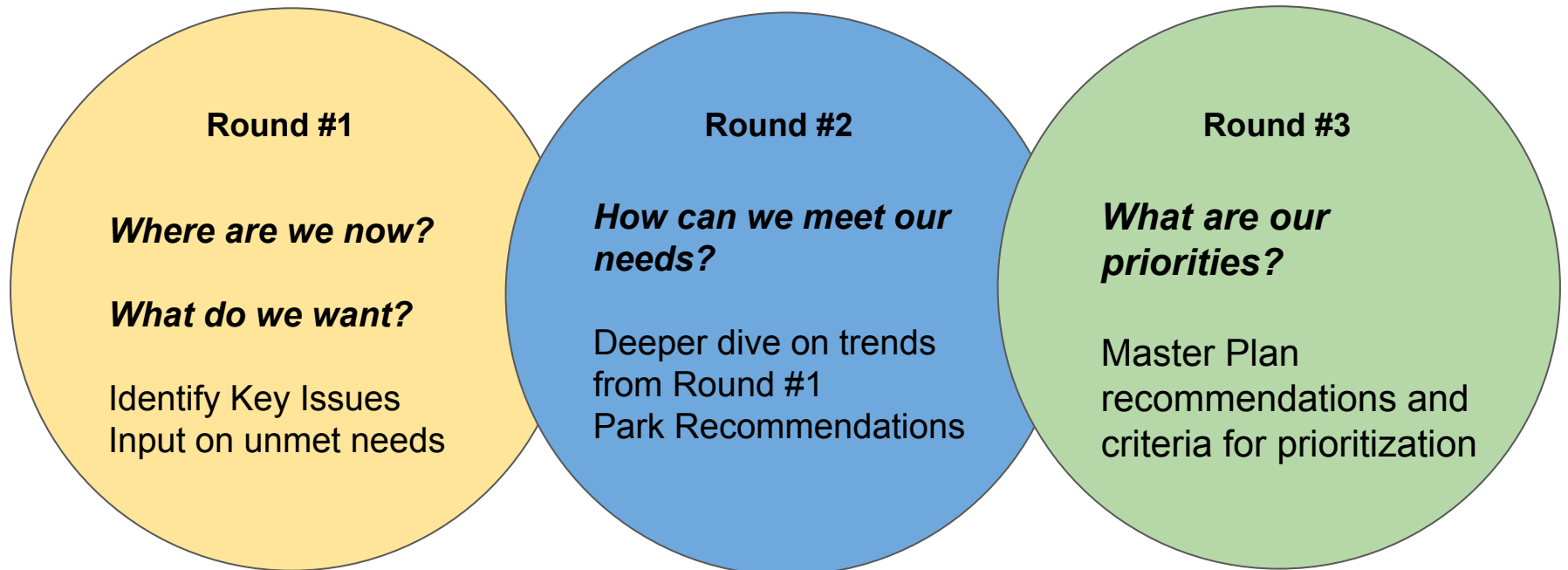
Purpose of the Master Plan

Set the **framework** for decision makers in the planning, maintenance, development, and or rehabilitation of Belmont's Parks and open space system and related recreational programming for a **15 year horizon.**

PROCESS



PROCESS: **OUTREACH STRATEGY**



PROCESS: **COMMUNITY AWARENESS**



Leveraging Existing Channels

- Social Media
- Banner on City Website
- E Newsletter
- Postcard Mailers/Sheets in Activity Kits
- Signs in Parks/Trails
- Existing Email Lists (Twin Pines, Barrett Master Plan, Etc.)
- School Newsletters
- Newspapers
- Neighborhood association, clubs, groups

PROCESS: **OUTREACH EVENTS**

- **Project Website**
- **Advisory Committee Meetings** *(4 Total)*
- **Community-Wide Survey**
- **Stakeholder Focus Group Meetings** *(6 Total) - User Group or Topic (Open Space, Teens, etc., ...)*
- **Neighborhood Meetings** *(6 Total)*
- **Community Pop Up Events** *(3 Total)*
- **Community Workshops** *(2 Total)*
- **Parks and Recreation Committee Presentation** *(4 Total)*
- **Planning Commission Meeting**
- **City Council Presentation** *(3 Total)*

EXISTING SITE ASSESSMENT

PARKS INVENTORY

PARKS INVENTORY



ALEXANDER PARK

400 Block of Yorkshire

Type: Group C

Size: 1.3 Acre

Constructed:

PARK OVERVIEW

Alexander Park is a high use park within a residential neighborhood adjacent to Yorkshire Way. The park's entrance is framed by a metal trellis which establishes the park well within the surrounding neighborhood context. A concrete walk encompasses the lawn area leading to a picnic area. On site, there are two play structures, two tennis courts, a handball court, a large lawn area, half-court basketball, picnic area, new pre-fab restroom, and two horseshoe pits. Parking is limited.

EXISTING CONDITIONS

Accessibility:

- No ADA accessible benches, picnic tables. Concrete looks non-compliant in some areas.

Furnishings:

- Wood benches are in fair condition.
- Picnic tables in fair condition, BBQ in poor condition.
- Restroom is new and in good condition.
- Horseshoe pits are in poor condition and underutilized.
- Tennis courts in fair condition.

Landscape:

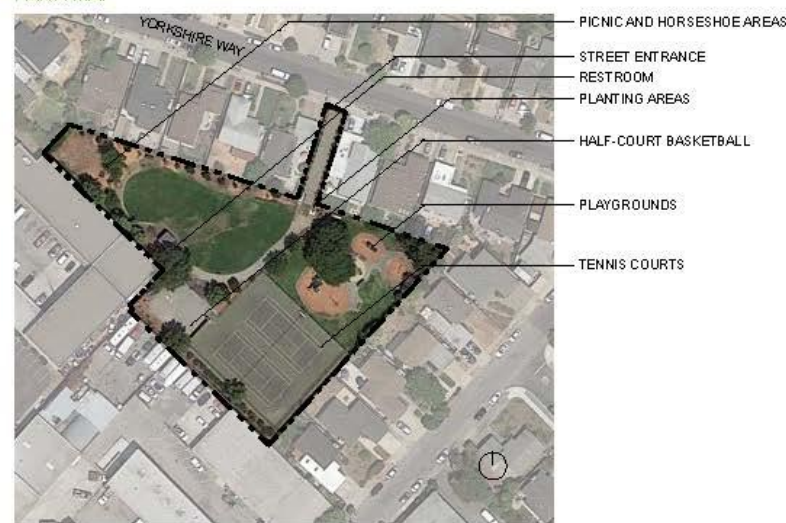
- Lawn is in fair condition.
- Trees around perimeter of site are in fair condition.
- Planting areas are bare.
- Pear trees near playground have deep crotches and problematic leaders.
- Ivy needs removal by picnic areas.
- Large oak needs removal.
- Planting near entrance in good condition.



EXISTING SITE CONDITIONS



PARK MAP



PROCESS: **COMMUNITY OUTREACH**

BelmontPROSPlan.com



ONLINE SURVEY AWARENESS

Round #1 Survey Participation Boosters

Presentations to the Community

City Council

Planning Commission

Youth Advisory Committee

VOICES - Youth Volunteer group

Rotary

Neighborhood Associations

Others?

Community Enhancers

Schoolforce

Youth sports leagues

Chamber of Commerce

Faith based organizations

Others?

Presentations will be virtual until
in-person gatherings are permitted