

# PARKS, RECREATION AND OPEN SPACE MASTER PLAN

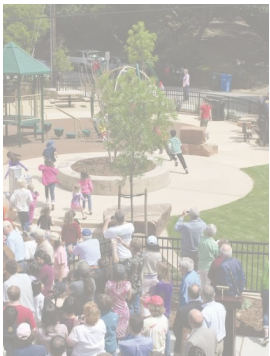
Presentation to Belmont & Redwood Shores Rotary Club  
March 29, 2021



# AGENDA

Purpose: Present the City of Belmont's Parks, Recreation and Open Space (PROS) Master Plan Project

- The Team
- Project Overview
- Outreach Strategy
- Efforts to Date
- Next Steps



# The Team

**Consultant:** Gates + Associates

**City Staff:** Belmont Parks & Recreation Department

**Advisory Committee:** Representatives of Belmont's neighborhoods, demographics, and interests

# PURPOSE

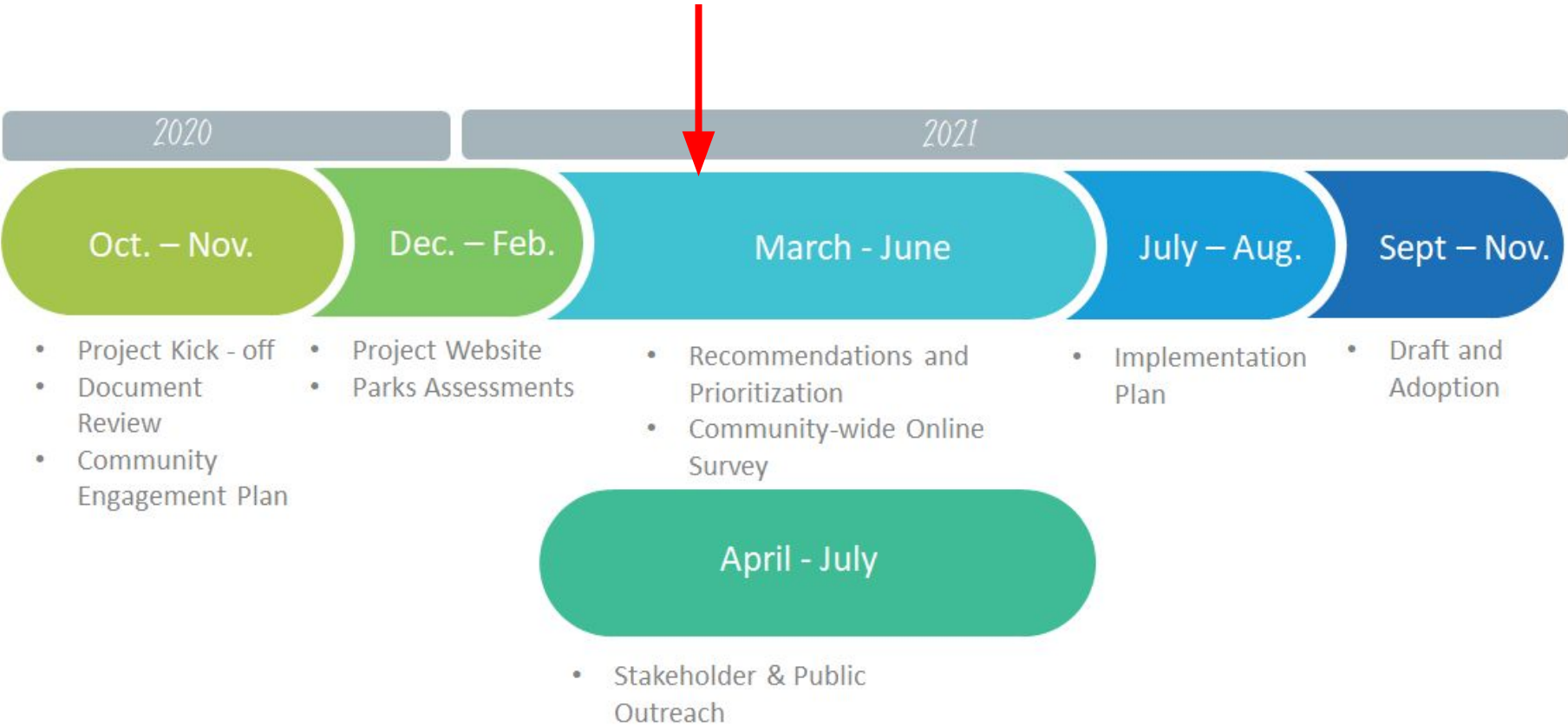
Set the **framework** for decision makers in the planning, maintenance, development, and/or rehabilitation of Belmont's parks and open space system and related recreational programming for a **15 year horizon**.

# GOALS & GUIDING PRINCIPLES

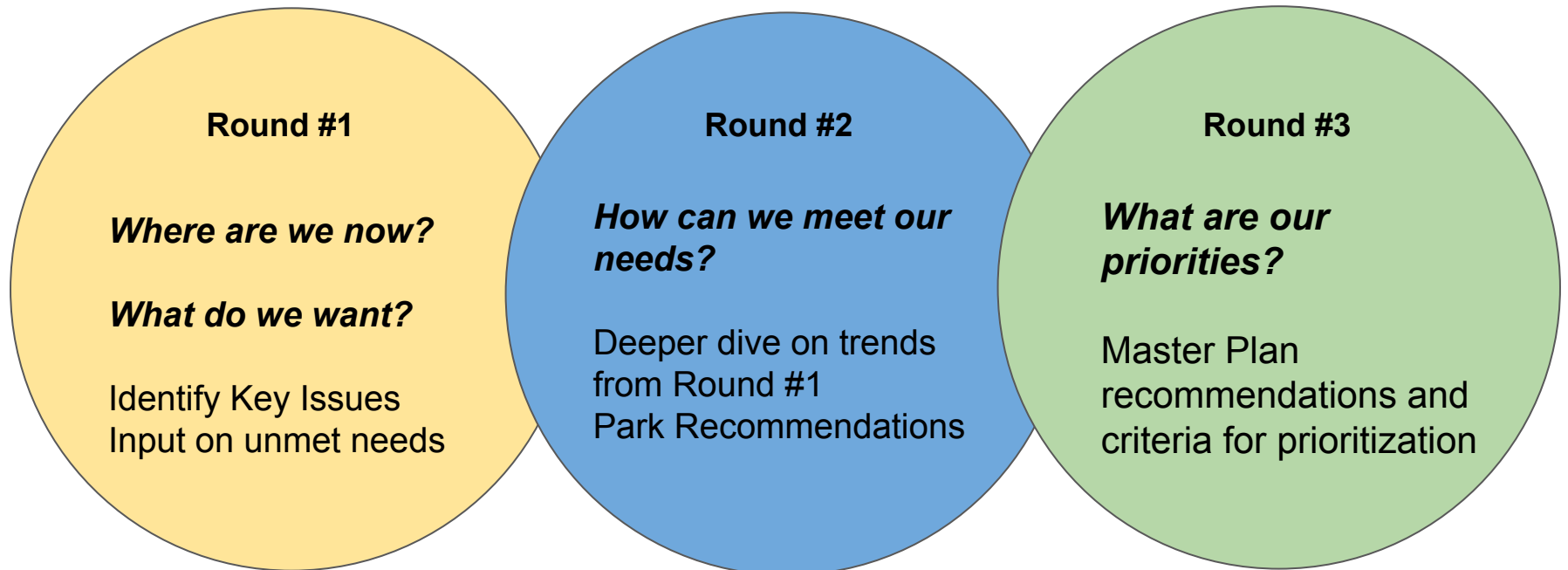
Develop a Master Plan that:

- Provide **equitable access** to resources and activities across the entire city
- Promote **inclusion** to people of all backgrounds, regardless of race, gender, sexual orientation, socioeconomic position or physical/cognitive ability
- Offer services and activities across a range of **interests, abilities, and ages**
- Reflect our commitment to **environmental resilience** and sustainability
- Respect the beauty and importance of our **natural resources**
- Advances **community health and well-being**
- Foster a sense of **community** and encourage **social interaction**
- Are **well maintained** and actively managed over time
- Can **adapt** to changing conditions and needs
- Utilize **transparent community process** to inform decisions

# PROCESS



# PROCESS: OUTREACH STRATEGY



# PROCESS: OUTREACH

## Outreach to date:

- Brand (Logo/Tagline)
- Project Website
- Identify Community Enhancers
- Selected Our Channels
- Prepare for Launch of Round #1 Survey
- Develop an Advisory Committee



# PROCESS: COMMUNITY OUTREACH

BelmontPROSPlan.com



# ADVISORY COMMITTEE

- Role:
  - **Insights:** represent a diverse perspective of interests and ideas
  - **Outreach:** gather feedback and serve as community liaison to Master Plan team
  - **Advise:** review and provide input on the Master Plan process

# SURVEY

- General Information Requested:
  - Who are you? *Age and Neighborhood*
  - Frequency of park, open space and outdoor recreation program use
  - Opinion on existing park, open space and outdoor recreation programs
  - Types of improvements desired for:
    - Parks
    - Open Spaces
    - Outdoor Recreation Programs

# PROCESS: OUTREACH EVENTS

- Project Website
- Advisory Committee Meetings *(4 Total)*
- Community-Wide Survey
- Stakeholder Focus Group Meetings *(6 Total) - User Group or Topic (Open Space, Teens, etc., ...)*
- Neighborhood Meetings *(6 Total)*
- Community Pop Up Events *(3 Total)*
- Community Workshops *(2 Total)*
- Parks and Recreation Committee Presentation *(4 Total)*
- Planning Commission Meeting
- City Council Presentation *(3 Total)*

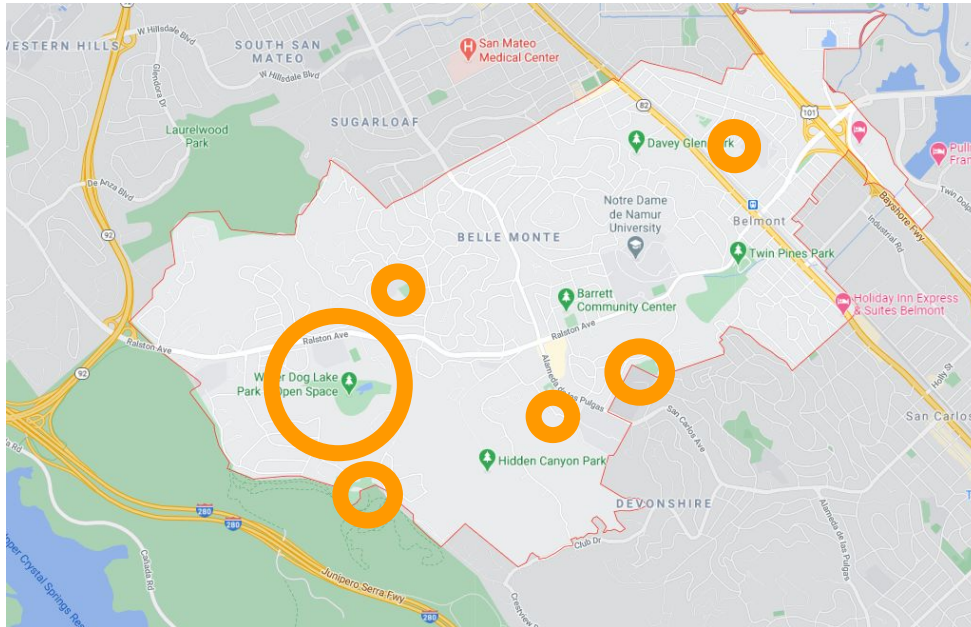
# BENCHMARKING

Benchmarking of 3 comparable  
Cities

- *San Carlos*
- *Foster City*
- *Burlingame*

City Staff Park Usage Study

- *Open Space – Waterdog*
- *Community Parks – McDougal Park & Athletic Fields, Belameda Park*
- *Neighborhood Parks – Cipriani, Alexander Park, Hallmark Park*



# EXISTING SITE ASSESSMENT

PARKS INVENTORY

PARKS INVENTORY



## ALEXANDER PARK

400 Block of Yorkshire  
 Type: Group C  
 Size: 1.3 Acre  
 Constructed:

### PARK OVERVIEW

Alexander Park is a high use park within a residential neighborhood adjacent to Yorkshire Way. The park's entrance is framed by a metal trellis which establishes the park well within the surrounding neighborhood context. A concrete walk encompasses the lawn area leading to a picnic area. On site, there are two play structures, two tennis courts, a handball court, a large lawn area, half-court basketball, picnic area, new pre-fab restroom, and two horseshoe pits. Parking is limited.

### EXISTING CONDITIONS

#### Accessibility:

- No ADA accessible benches, picnic tables. Concrete looks non-compliant in some areas.

#### Furnishings:

- Wood benches are in fair condition.
- Picnic tables in fair condition, BBQ in poor condition.
- Restroom is new and in good condition.
- Horseshoe pits are in poor condition and underutilized.
- Tennis courts in fair condition.

#### Landscape:

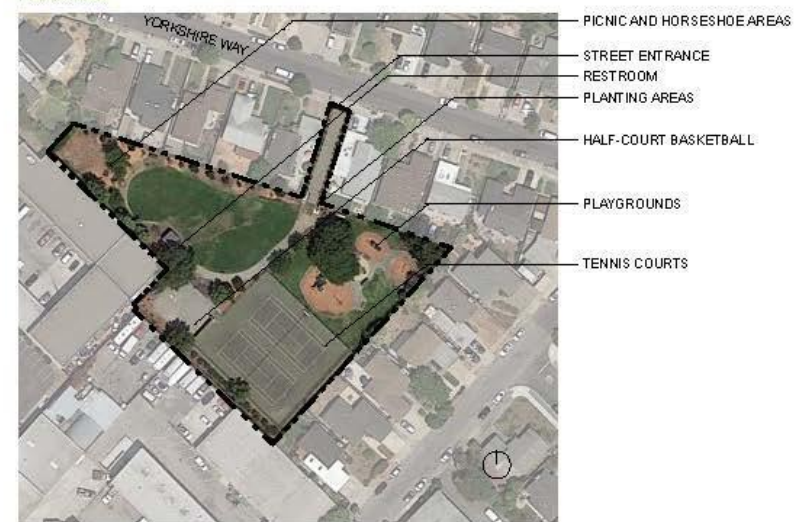
- Lawn is in fair condition.
- Trees around perimeter of site are in fair condition.
- Planting areas are bare.
- Pear trees near playground have deep crotches and problematic leaders.
- Ivy needs removal by picnic areas.
- Large oak needs removal.
- Planting near entrance in good condition.



### EXISTING SITE CONDITIONS



### PARK MAP





## NEXT STEPS

- Online Survey Launch

Late March, 2021

- Planning Commission Presentation

April 6, 2021

- Ongoing Survey Awareness Campaign