

PARKS, RECREATION AND OPEN SPACE MASTER PLAN

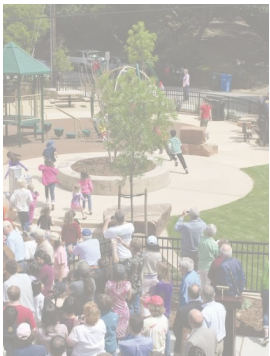
Presentation to Belmont Planning Commission
April 6, 2021



AGENDA

Purpose: Present the City of Belmont's Parks, Recreation and Open Space (PROS) Master Plan Project

- The Team
- Project Overview
- Outreach Strategy
- Efforts to Date
- Next Steps



The Team

Consultant: Gates + Associates

City Staff: Belmont Parks & Recreation Department

Advisory Committee: Representatives of Belmont's neighborhoods, demographics, and interests

PURPOSE

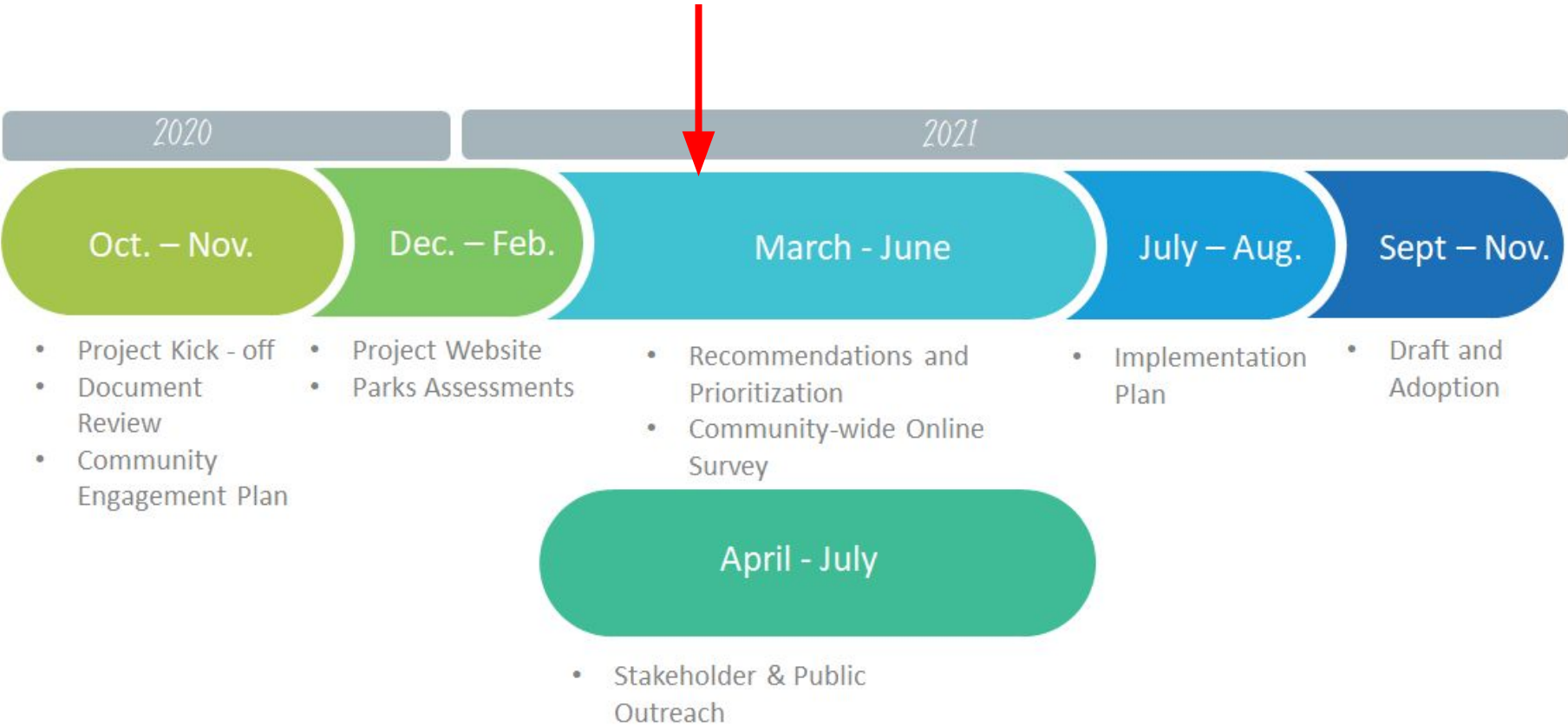
Set the **framework** for decision makers in the planning, maintenance, development, and/or rehabilitation of Belmont's parks and open space system and related recreational programming for a **15 year horizon**.

GOALS & GUIDING PRINCIPLES

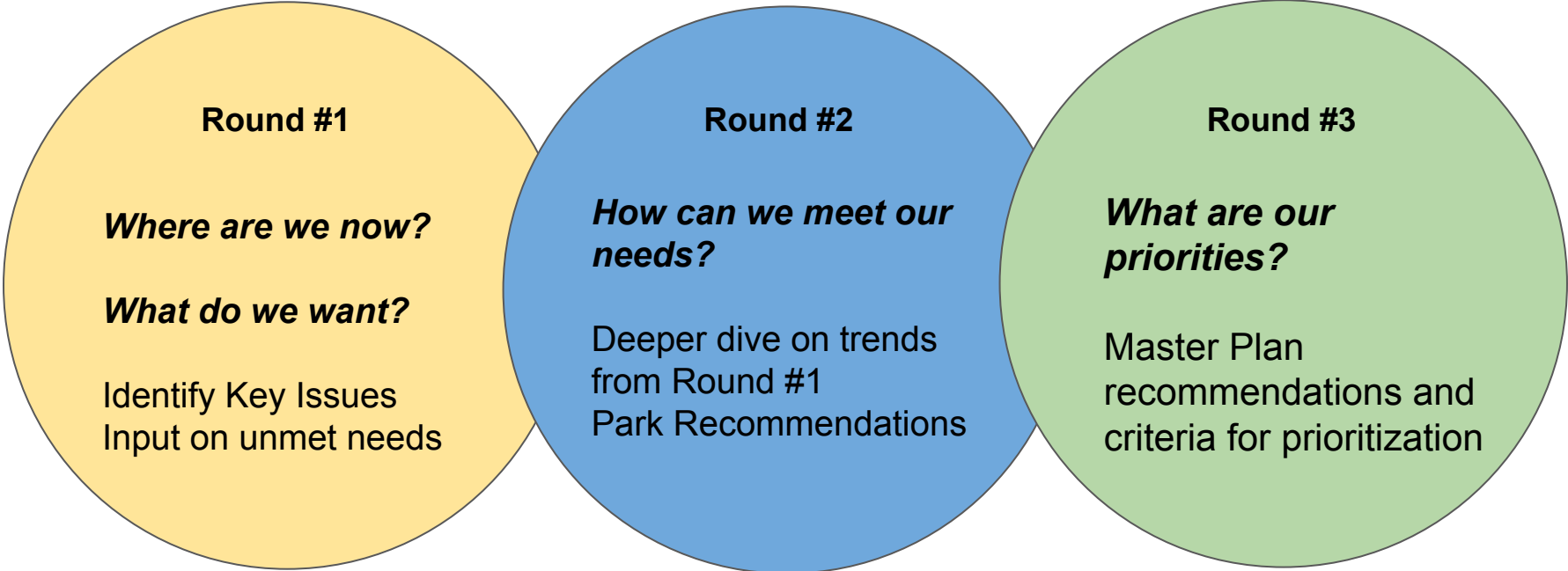
Develop a Master Plan that:

- Provide **equitable access** to resources and activities across the entire city
- Promote **inclusion** to people of all backgrounds, regardless of race, gender, sexual orientation, socioeconomic position or physical/cognitive ability
- Offer services and activities across a range of **interests, abilities, and ages**
- Reflect our commitment to **environmental resilience** and sustainability
- Respect the beauty and importance of our **natural resources**
- Advances **community health and well-being**
- Foster a sense of **community** and encourage **social interaction**
- Are **well maintained** and actively managed over time
- Can **adapt** to changing conditions and needs
- Utilize **transparent community process** to inform decisions

PROCESS



PROCESS: OUTREACH STRATEGY



PROCESS: OUTREACH

Outreach to date:

- Brand (Logo/Tagline)
- Project Website
- Identify Community Enhancers
- Selected Our Channels
- Prepare for Launch of Round #1 Survey
- Develop an Advisory Committee
- Survey Design & Launch

PROCESS: COMMUNITY OUTREACH

BelmontPROSPlan.com



ADVISORY COMMITTEE

- Role:
 - **Insights:** represent a diverse perspective of interests and ideas
 - **Outreach:** gather feedback and serve as community liaison to Master Plan team
 - **Advise:** review and provide input on the Master Plan process

SURVEY

- General Information Requested:
 - Who are you? *Age and Neighborhood*
 - Frequency of park, open space and outdoor recreation program use
 - Opinion on existing park, open space and outdoor recreation programs
 - Types of improvements desired for:
 - Parks
 - Open Spaces
 - Outdoor Recreation Programs

PROCESS: OUTREACH EVENTS

- Project Website
- Advisory Committee Meetings *(4 Total)*
- Community-Wide Survey
- Stakeholder Focus Group Meetings *(6 Total) - User Group or Topic (Open Space, Teens, etc., ...)*
- Neighborhood Meetings *(6 Total)*
- Community Pop Up Events *(3 Total)*
- Community Workshops *(2 Total)*
- Parks and Recreation Committee Presentation *(4 Total)*
- Planning Commission Meeting
- City Council Presentation *(3 Total)*

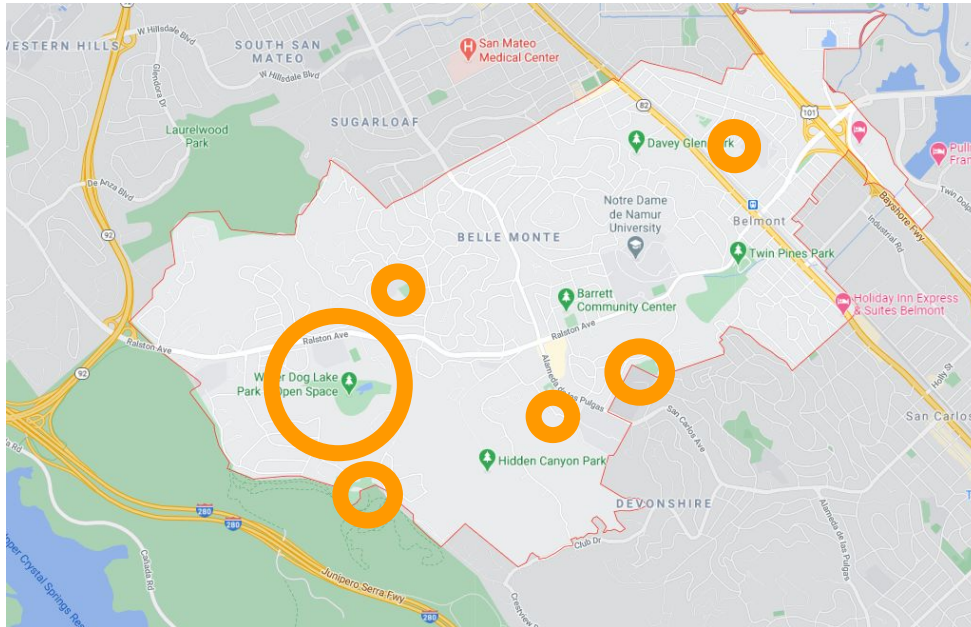
BENCHMARKING

Benchmarking of 3 comparable
Cities

- *San Carlos*
- *Foster City*
- *Burlingame*

City Staff Park Usage Study

- *Open Space – Waterdog*
- *Community Parks – McDougal Park & Athletic Fields, Belameda Park*
- *Neighborhood Parks – Cipriani, Alexander Park, Hallmark Park*



EXISTING SITE ASSESSMENT

PARKS INVENTORY

PARKS INVENTORY



ALEXANDER PARK

400 Block of Yorkshire
 Type: Group C
 Size: 1.3 Acre
 Constructed:

PARK OVERVIEW

Alexander Park is a high use park within a residential neighborhood adjacent to Yorkshire Way. The park's entrance is framed by a metal trellis which establishes the park well within the surrounding neighborhood context. A concrete walk encompasses the lawn area leading to a picnic area. On site, there are two play structures, two tennis courts, a handball court, a large lawn area, half-court basketball, picnic area, new pre-fab restroom, and two horseshoe pits. Parking is limited.

EXISTING CONDITIONS

Accessibility:

- No ADA accessible benches, picnic tables. Concrete looks non-compliant in some areas.

Furnishings:

- Wood benches are in fair condition.
- Picnic tables in fair condition, BBQ in poor condition.
- Restroom is new and in good condition.
- Horseshoe pits are in poor condition and underutilized.
- Tennis courts in fair condition.

Landscape:

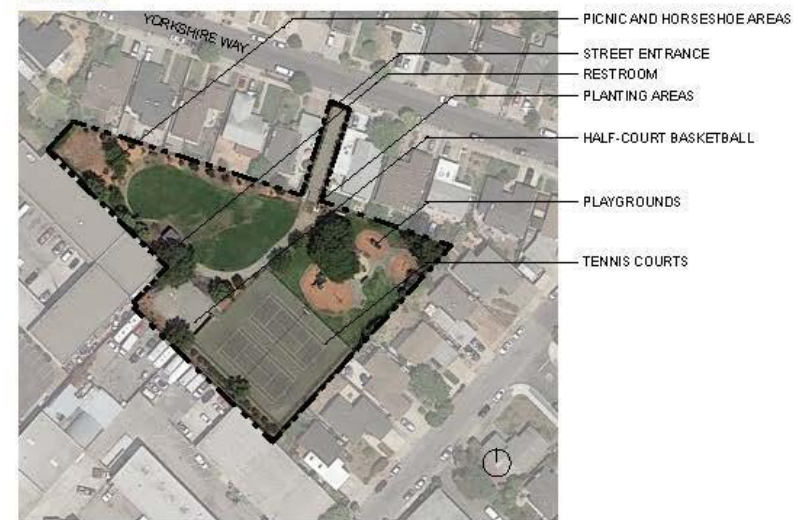
- Lawn is in fair condition.
- Trees around perimeter of site are in fair condition.
- Planting areas are bare.
- Pear trees near playground have deep crotches and problematic leaders.
- Ivy needs removal by picnic areas.
- Large oak needs removal.
- Planting near entrance in good condition.



EXISTING SITE CONDITIONS



PARK MAP



◇◇◇ NEXT STEPS

- Ongoing Survey Awareness Campaign
- Stakeholder Interviews, Focus groups
- Review Preliminary Survey Trends