

PARKS, RECREATION, AND OPEN SPACE (PROS) MASTER PLAN

City Council
March 12, 2024



PROS PLAN VISION

Re-imagine the Belmont PROS system to create the City's Backyard that fosters **inclusive, experiential, and nurturing public spaces** by setting the framework for decision makers in planning, maintenance, development, and/or rehabilitation, implementable over a **15 year horizon**.



AGENDA

MEETING PURPOSE

1. Possible resolution to approve PROS Plan and CEQA Addendum

MEETING TOPICS

- Document organization + framework
- Strategies + recommendations
- Recap revisions to date
- EIR Addendum
- Next steps

OUTREACH UPDATE

ON THE WEB

Project website: home page button to documents + FAQ tab

www.belmontprosplan.com

City website: home page banner and spotlight on P&R page

www.belmont.gov

www.belmont.gov/departments/parks-and-recreation

SOCIAL MEDIA

P&R: Facebook, Instagram, Twitter

Citywide: Nextdoor, Facebook, Instagram, Twitter, LinkedIn

EMAIL

Citywide eNews: Jan 12, Jan 19, + Feb 2

P&R eNews: Feb 5

Direct email: Jan 19

ANNOUNCEMENTS

P&R Commission: Jan 10 (agenda item: introduction) +

Feb 7 (agenda item: recommendation to Council)

City Council: Jan 23 (verbal announcement from Mayor Mates)

INTRODUCTION

PROS PLAN PURPOSE

Study the existing parks, recreation, and open space system

- Identify gaps
- Develop strategies
- Present recommendations
- Assess opportunities
- Establish a framework for prioritization

that can be periodically revisited as resources become available + circumstances evolve

DOCUMENT ORGANIZATION

EXECUTIVE SUMMARY

PART 1.

WHERE WE ARE

CHAPTER 1	INTRODUCTION	3
	Purpose + Vision	
	Guiding Principles	
	Planning Process	
	Document Organization	
CHAPTER 2	CONTEXT	7
	The City of Belmont	
	Planning Context	
	Recreation Trends	
CHAPTER 3	EXISTING CONDITIONS	27
	Overview	
	Park Typologies	
	Parkland Distribution	
	Access + Connections	
	Amenities	
	Park Site Assessments	
	School Site Assessments	
	Open Space Assessments	

PART 2.

WHERE WE WANT TO BE

CHAPTER 4	COMMUNITY INPUT	101
	Overview	
	Community Themes	
	Informing the Big Ideas	
CHAPTER 5	NEEDS ASSESSMENT	109
	Amenity Ratio	
	Ideal Amenity Quantity	
CHAPTER 6	GOALS	121
	Framework	

PART 3.

HOW WE GET THERE

CHAPTER 7	STRATEGIES	129
	Strategies	
	Open Space Objectives + Policies	
CHAPTER 8	RECOMMENDATIONS	145
	Overview	
	System-wide Recommendations	
	Park-specific Recommendations	
	Opportunities	
	Open Space Recommendations	
CHAPTER 9	IMPLEMENTATION	215
	Overview	
	Prioritization	
	Funding Strategies	
	Partnerships	
	Action Plan	
	Open Space Priorities	

APPENDICES

UNDER SEPARATE COVER

- A. Advisory Committee
- B. Definitions
- C. Park Inventory
- D. NRPA Benchmarks
- E. Amenity Projections
- F. Open Space Management Plan
- G. Prioritization Matrix
- H. Probable Costs
- I. Community Outreach

PROS FRAMEWORK

WHERE WE ARE

Purpose + Vision



Guiding Principles



Needs Assessment

WHERE WE WANT TO BE

Community Themes



Big Ideas



Goals

HOW WE GET THERE

Strategies



Recommendations



Prioritization

System-Wide

Park-Specific

Opportunities

Open Space

OSMP FRAMEWORK

**WHERE WE
ARE**

Environmental Assessment

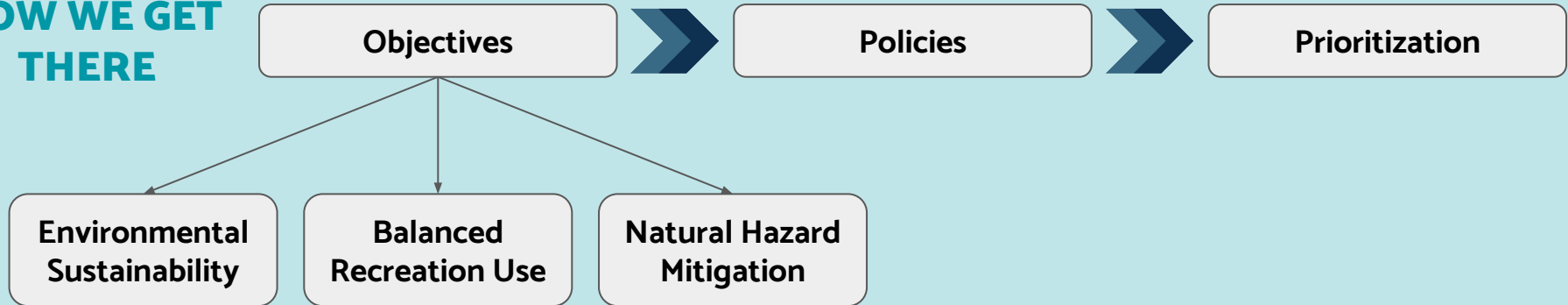
+

Recreation Use Assessment

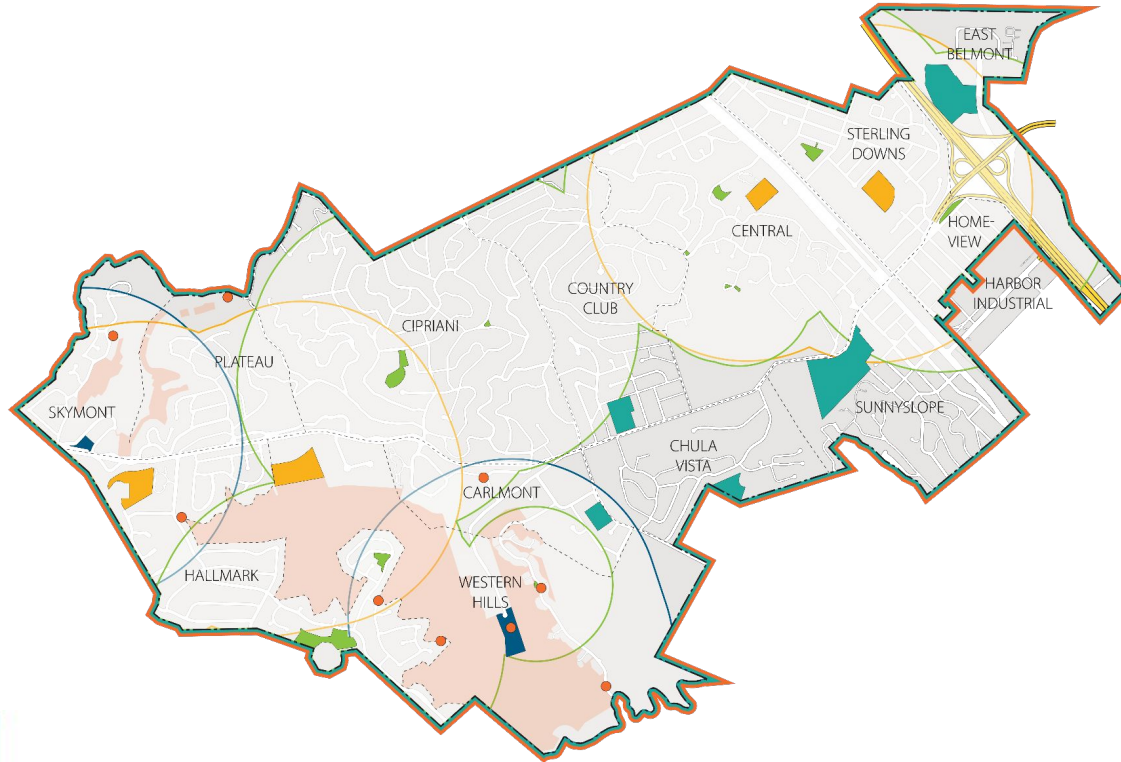
**WHERE WE
WANT TO BE**

PROS Goal 7: Develop and implement an Open Space Management Plan (OSMP)

**HOW WE GET
THERE**



ENVISIONING CITY-WIDE PARK ACCESS



An Interconnected Park System

- Identify areas with low access
- Ensure amenities are well distributed
- Investigate new opportunities
- Align with ongoing ped + bike efforts

Park Typologies

- Neighborhood Park ¼ mile (Tier 1) or ½ mile (Tier 2)
- Community Park Entire City
- Undeveloped Park ½ mile
- School (JUA) ½ mile
- Open Space/Trailhead Entire City

STRATEGIES

STRATEGIES: BROAD INITIATIVES THAT WILL...

- Accomplish the PROS goals
- Benefit the PROS system as a whole
- Provide guidance for future decisions
- Align with existing planning efforts



SYSTEM-WIDE **RECOMMENDATIONS**

**Inclusive +
All-Abilities Play**



**Social Gathering
Space**



**Pop-up Park
Installations**




Interconnect Toolkit

Activation Plan

Usage Study

PARK-SPECIFIC RECOMMENDATIONS

INCREASING MAGNITUDE OF RECOMMENDATIONS 						
Magnitude	EXISTING MASTER PLAN	MINOR IMPROVEMENT	UPGRADED OR NEW AMENITY	PARK REDESIGN	UNDEVELOPED PARKS	NEW PARK OPPORTUNITY
Existing Condition	Master plans recently adopted Created with extensive community input	Parks recently developed or in very good condition	Current park functioning well	Rethink accessibility and park layout No change in use	Existing park is undeveloped	Add parkland To fill gaps in park access City-owned property
Recommendation	Implement existing master plan	Minor improvements identified to maintain high quality	Upgrade existing amenity or new amenity to meet identified needs or gaps	Undertake park design plan	Develop and amenitize site	Create, develop, and amenitize site

STANDARD BASELINE AMENITIES

NEIGHBORHOOD PARK (TIER 1)

- a** Natural Environment
- b** Seating
- c** Identifiable Amenity

NEIGHBORHOOD PARK (TIER 2)

- a** Natural Environment
- b** Seating
- c** Play Amenity
- d** Picnic Opportunity
- e** Multi-Purpose Flexible Space
- f** Recreation Amenity

COMMUNITY PARK

- a** Natural Environment
- b** Seating
- c** Play Amenity
- d** Picnic Opportunity
- e** Multi-Purpose Flexible Space
- f** Recreation Amenity
- g** Off-Street Parking
- h** Permanent Restroom
- i** Athletic Field or Community Facility

EXAMPLE: IMPLEMENT MASTER PLAN

TWIN PINES PARK

TWIN PINES PARK

RECOMMENDATIONS TO IMPLEMENT EXISTING MASTER PLAN

ACCESSIBILITY

- 1 Restructure arrival zone to strength visual and physical connections
- 2 Prioritize pedestrian experience in Town Square area
- 3 Develop trail connections beyond park boundaries
- 4 Add looped walking path

AMENITY

- 5 Renovate playground structure and expand with Inclusive+All-Abilities Play
- 6 Add water play element
- 7 Renovate picnic area
- 8 Add bocce ball court
- 9 Add teen outdoor space
- 10 Add multi-use lawn

LANDSCAPE

- 11 Establish and improve visual and access connections to Belmont Creek

THE HEART OF BELMONT

MASTER PLAN (2019)

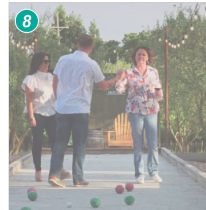


Source: Twin Pines Park Master Plan (2019)

CHARACTER IMAGES



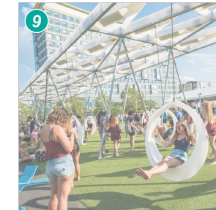
Looped Walking Path



Bocce Ball Court



Water Play Element

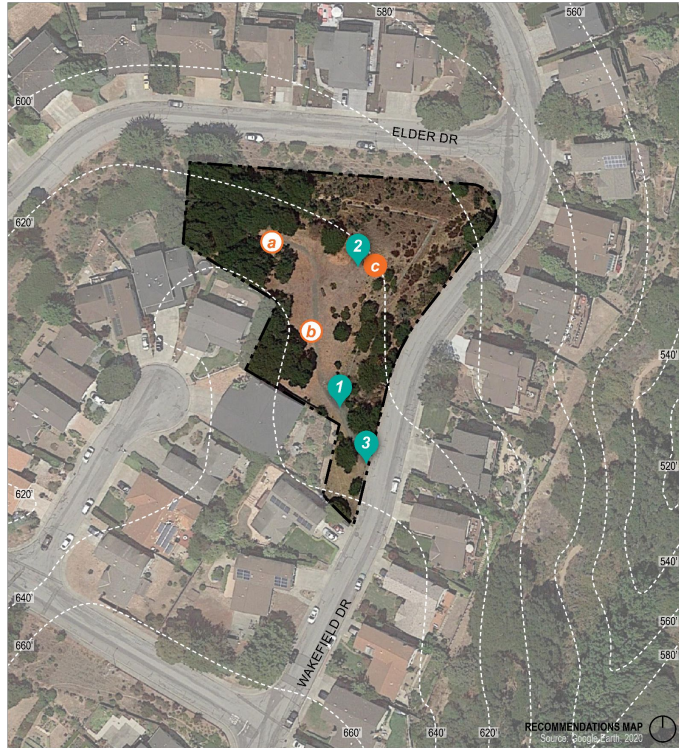


Teen Outdoor Space

EXAMPLE: MINOR IMPROVEMENTS

WAKEFIELD PARK

THE PARK WITH THE VIEW



WAKEFIELD PARK

RECOMMENDATIONS MINOR IMPROVEMENTS

NEIGHBORHOOD PARK TIER 1 STANDARD BASELINE AMENITIES

- a** Natural Environment
- b** Seating
- c** Identifiable Amenity
(Create overlook opportunity)

ACCESSIBILITY

- 1** Improve existing walking path

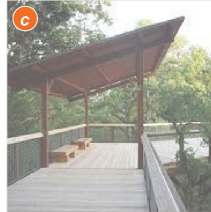
AMENITY

- 2** Add benches
- 3** Add entrance signage to increase park visibility

LANDSCAPE

- Plant trees to increase shade
- Add native planting areas
- Public art opportunity

CHARACTER IMAGES



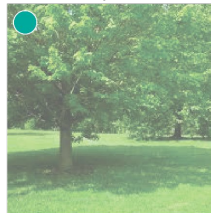
Identifiable Amenity



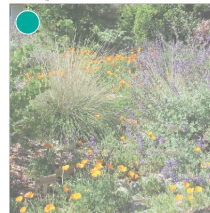
Walking Path



Seating



Trees for Shade



Native Planting Areas

ICON LEGEND

a Existing Standard Baseline Amenity

a Recommendation: Add Standard Baseline Amenity

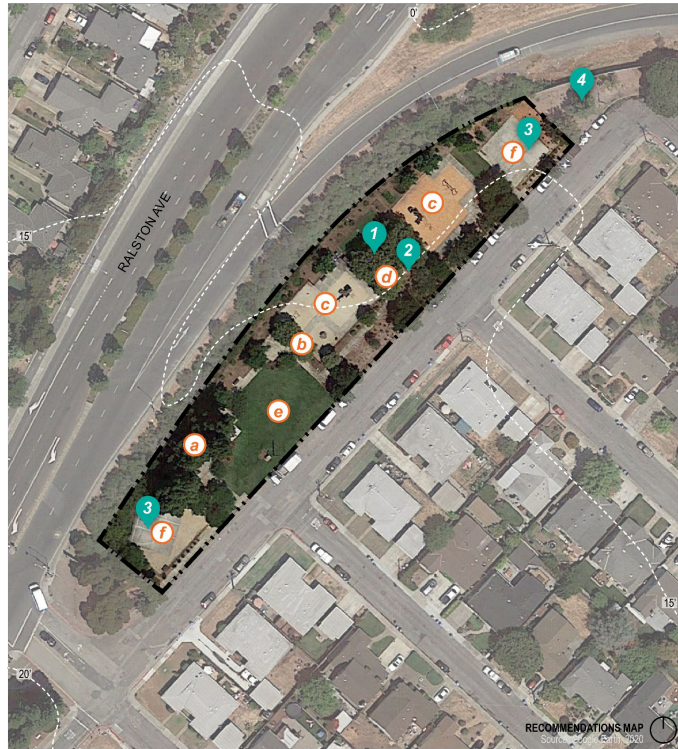
Recommendation: Add accessibility, amenity, or landscape
(Specific location recommended within the park)

● Recommendation: Add accessibility, amenity, or landscape
(Apply throughout the park DR has numerous possible locations)

EXAMPLE: UPGRADED OR NEW AMENITY

O'DONNELL PARK

MULTI-USE NEIGHBORHOOD SPACE



O'DONNELL PARK

RECOMMENDATIONS UPGRADED OR NEW AMENITY

NEIGHBORHOOD PARK TIER 2 STANDARD BASELINE AMENITIES

- a** Natural Environment
- b** Seating
- c** Play Amenity
- d** Picnic Opportunity
- e** Multi-Purpose Flexible Space
- f** Recreation Amenity

ACCESSIBILITY

No recommendations

AMENITY

- 1** Establish as a reservable picnic area (small)
- 2** Replace BBQs
- 3** Refurbish the existing half basketball courts
- 4** Add shade, tables, and outdoor games

LANDSCAPE

- 1** Refresh planting areas with native plants
- 2** Maintain high-quality landscape condition across the site

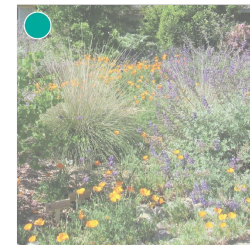
CHARACTER IMAGES



Reservable Picnic Area (Small)



Shade, Tables, and Outdoor Games



Native Planting Areas

ICON LEGEND

- a** Existing Standard Baseline Amenity
- a** Recommendation: Add Standard Baseline Amenity
- #** Recommendation: Add accessibility, amenity, or landscape (Specific location recommended within the park)
- 1-4** Recommendation: Add accessibility, amenity, or landscape (Apply throughout the park OR has numerous possible locations)

OPEN SPACE MANAGEMENT PLAN:

A SET OF OBJECTIVES, POLICIES, AND PRIORITIES BASED ON...

- **Environmental Assessment:** trails, stream crossings, habitat, vegetation
- **Recreational Use Assessment:** impact of recreation on sensitive resources
- Site visits + data collected in the field
- Relevant databases + peer-reviewed literature
- Community input
- Regional best practices, guidelines + regulations



Environmental Sustainability



Balanced Recreation Use



Natural Hazard Mitigation

KEY TAKEAWAYS

1. Overall habitat quality is high
2. Existing nature-based recreational use can continue on trails
3. Continue wildfire fuel reduction efforts

PRIORITIES

TIER 1

- Improve stream crossings (H)
- Seasonal/weather-dependent restrictions on maintenance (E)
- Fuels reduction plan (M)
- Monitor recreation use (H)

TIER 2

- Nature-based recreation programs (M)
- Volunteer restoration programs (E)
- Trail calming features (H)

Easy

These actions can be performed immediately under **existing** City programs, funding, or with minimal additional effort.

Medium

These actions require **additional** planning, equipment, staffing, funding – either internal or external, or other operational changes.

Hard

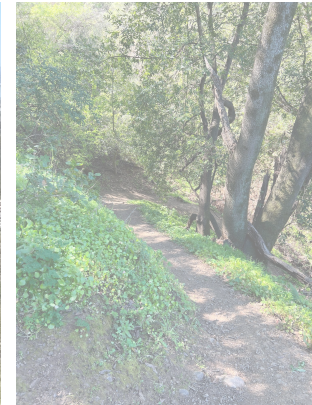
These actions may require **substantial** planning, interagency coordination, staffing, funding, or other operational changes.

FURTHER STUDIES

NEXT STEPS

- Utilize the methodology presented in the OSMP for ongoing observation + monitoring
- Develop an annual Fuel Reduction Plan
- Conduct engineering studies for future stream crossing projects
- Adopt trail design guidelines

(specific to Belmont OR adopt an existing set from the State or other reputable source)



IMPLEMENTATION

PRIORITIZATION: BASED ON THE ABILITY OF A RECOMMENDATION TO...

- Further the PROS goals
- Respond to community priorities
- Resolve an existing deficiency
- Address an existing condition

FUNDING + PARTNERSHIPS: OPPORTUNITIES TO COLLABORATE ON...






- Capital improvements
- Maintenance + operations

ACTION PLAN: IMPORTANT TARGETS IN THREE TIME FRAMES...

- Short term > Long term > Ongoing

RECENT REVISIONS

THE PROS PLAN WAS **RECOMMENDED** BY THE PARKS AND RECREATION COMMISSION ON JULY 6, 2022 TO CITY COUNCIL FOR APPROVAL **WITH THE FOLLOWING AMENDMENTS...**

-  1. Consolidate the OSMP's Base Plan and Management Alternatives objectives, policies, and implementation actions into a single plan.
-  2. Clearly present priority recommendations in the OSMP by theme - environmental sustainability, balanced recreation uses and trail management, and natural hazard mitigation.
-  3. Pursue the creation of dedicated parkland in downtown Belmont and the Belmont Village Specific Plan area in response to potential residential density increase in the area due to anticipated housing unit development as outlined in the 2023-2031 Housing Element update.
-  4. Apply consistent terminology to remove ambiguity.
-  5. Refine specific graphics for clarity.



2024 COMMISSIONER COMMENTS

REVISION SUMMARY

FORMATTING

1. Color-coding graphics, tables, headers
2. Reorganizing sections
3. Presenting information visually

CONTENT

1. Defining terminology
2. Streamlining text for clarity and flow
3. Elaborating on new concepts
4. Reflects latest meetings + available info

NOT CHANGED: THE PRIMARY TAKEAWAYS OF THE DOCUMENT...

- Inventory + Needs Assessment
- Opportunities + Recommendations
- Prioritization Matrix + Action Plan

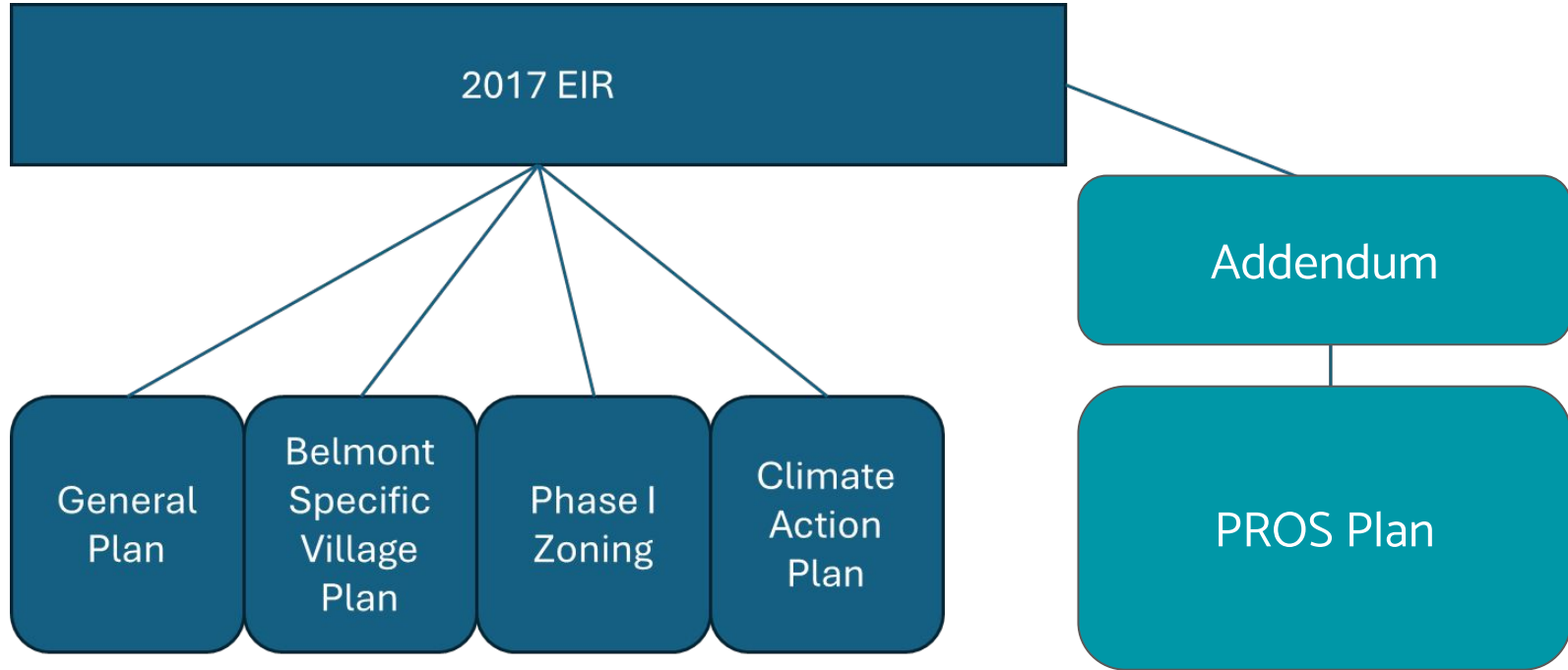
CEQA PATHWAY

- The PROS Plan was reviewed according to California Environmental Quality Act (CEQA)
- Policies and actions in the PROS Plan (including OSMP) were largely already addressed in the General Plan EIR
- To retain consistency and reduce redundancy, **an addendum to the 2017 EIR** was prepared
- The addendum and the 2017 EIR are programmatic – *they address potential impacts that may result from the implementation of policies and actions*

Addenda are used to make changes or additions to prior EIRs or NDs without major changes to the

- Project,
- Circumstances,
- Information.

CEQA UPDATE



EIR ADDENDUM

- The addendum analyzed the potential impacts from the PROS Plan as they relate to the impacts discussed in the 2017 EIR

FINDINGS

- Limited new impacts were less than significant
- No new significant impacts that had not already been discussed - no additional review is needed
- All mitigation measures will apply

NEXT STEPS

1. **ADOPT A RESOLUTION TO APPROVE THE PROS PLAN AND CEQA ADDENDUM**
2. **AS SPECIFIC PROJECTS EMERGE, INITIATE COMMUNITY ENGAGEMENT**
3. **PERIODICALLY REVISIT THE PROS PLAN AS RESOURCES BECOME AVAILABLE + PRIORITIES CHANGE**

